

# Urmston Grammar School

## Child Protection and Safeguarding Policy



Approved by: Full Governing Body  
On: 12 October 2023

Date of last review: September 2023

Next review: September 2024

## **Contents**

- Important contacts
- Aims
- Legislation and statutory guidance
- Definitions
- Equality statement
- Roles and responsibilities
- Confidentiality
- Recognising abuse and taking action
- Online safety and mobile technology
- Notifying parents or carers
- Pupils with special educational needs, disabilities or health issues
- Pupils with a social worker
- Looked after and previously looked after children
- Complaints and concerns about school safeguarding policies
- Record-keeping
- Training
- Monitoring arrangements
- Links with other policies

## **Appendices**

1. Types of abuse
2. Safer recruitment and DBS checks – policy and procedures
3. Allegations of abuse made against staff
4. Specific safeguarding issues

## Important contacts

Within Urmston Grammar

### **Headteacher**

Mrs Riffat Wall

Contact details : email: [rwall@urmstongrammar.co.uk](mailto:rwall@urmstongrammar.co.uk)

Phone: 0161 748 2875 ext. 200

### **Designated Safeguarding Lead**

Mr Philip Roberts

Contact details : email : [proberts@urmstongrammar.co.uk](mailto:proberts@urmstongrammar.co.uk)

Phone: 0161 748 2875 ext.

### **Deputy Designated Safeguarding Lead**

Mrs Alison Thomason

Contact details : email: [athomason@urmstongrammar.co.uk](mailto:athomason@urmstongrammar.co.uk)

Phone: 0161 748 2875 ext. 206

### **Chair of Governors**

Mr Nick Crowther

Contact details : email: [nickcrowther@live.com](mailto:nickcrowther@live.com)

Phone: 0161 748 2875

### **Designated Urmston Grammar governor for safeguarding**

Mrs Tracey Booth

Contact details: email: [tjbooth458@gmail.com](mailto:tjbooth458@gmail.com)

Phone : 0161 748 2875

### **Head of Sixth Form/Deputy Designated Safeguarding Lead**

Miss A Lingwood

Contact details: email: [alingwood@urmstongrammar.org.uk](mailto:alingwood@urmstongrammar.org.uk)

Phone : 0161 748 2875

Within Trafford Local Authority

**First Response**

Ground floor, Trafford town hall, Talbot road, Stretford, M32 0TH  
Phone : 0161 912 5125

**Children's social care (Out of hours) / Emergency duty team (EDT)**

Phone : 0161 912 2020

**Safeguarding team**

Quay west, Trafford Wharf road, Trafford Park, M17 1HH  
Phone : 0161 912 5141

**Local Authority Designated Officer (LADO)**

Anita Hopkins

Contact details: email: [anita.hopkins@trafford.gov.uk](mailto:anita.hopkins@trafford.gov.uk)

Phone: 0161 912 5024

The Police

**Greater Manchester Police**

Phone: 0161 872 5050

## Aims

The school aims to ensure that:

- Appropriate action is taken in a timely manner to safeguard and promote children's welfare.
- All staff are aware of their statutory duties with respect to safeguarding.
- Staff are properly trained in recognising and reporting safeguarding issues.

## Legislation and statutory guidance

This policy is based on the Department for Education's statutory guidance [Keeping Children Safe in Education \(2023\)](#) and [Working Together to Safeguard Children \(2018\)](#), and the [Governance Handbook](#). We comply with this guidance and the arrangements agreed and published by our 3 local safeguarding partners.

This policy is also based on the following legislation:

Section 175 of the [Education act \(2002\)](#) which places a duty on schools and authorities to safeguard and promote the welfare of students.

[The school staffing \(England\) regulations \(2009\)](#) which set out what must be recorded on the single central record and the requirements for at least 1 person conducting an interview to be trained in safer recruitment techniques.

Part 3 of the schedule to the [Education \(Independent School Standards\) Regulations 2014](#), which places a duty on academies and independent schools to safeguard and promote the welfare of pupils at the school.

- › [The Children Act 1989](#) (and [2004 amendment](#)), which provides a framework for the care and protection of children
- › Section 5B(11) of the Female Genital Mutilation Act 2003, as inserted by section 74 of the [Serious Crime Act 2015](#), which places a statutory duty on teachers to report to the police where they discover that female genital mutilation (FGM) appears to have been carried out on a girl under 18
- › [Statutory guidance on FGM](#), which sets out responsibilities with regards to safeguarding and supporting girls affected by FGM
- › [The Rehabilitation of Offenders Act 1974](#), which outlines when people with criminal convictions can work with children
- › Schedule 4 of the [Safeguarding Vulnerable Groups Act 2006](#), which defines what 'regulated activity' is in relation to children
- › [Statutory guidance on the Prevent duty](#), which explains schools' duties under the Counter-Terrorism and Security Act 2015 with respect to protecting people from the risk of radicalisation and extremism
- › [The Human Rights Act 1998](#), which explains that being subjected to harassment, violence and/or abuse, including that of a sexual nature, may breach any or all of the rights which apply to individuals under the [European Convention on Human Rights](#) (ECHR)
- › [The Equality Act 2010](#), which makes it unlawful to discriminate against people regarding particular protected characteristics (including disability, sex, sexual orientation, gender reassignment and race). This means our governors and headteacher should carefully consider how they are supporting their pupils with regard to these characteristics. The Act allows our school to take positive action to deal with particular disadvantages affecting pupils (where we can show it's proportionate). This includes

making reasonable adjustments for disabled pupils. For example, it could include taking positive action to support girls where there's evidence that they're being disproportionately subjected to sexual violence or harassment

- [The Public Sector Equality Duty \(PSED\)](#), which explains that we must have due regard to eliminating unlawful discrimination, harassment and victimisation. The PSED helps us to focus on key issues of concern and how to improve pupil outcomes. Some pupils may be more at risk of harm from issues such as sexual violence; homophobic, biphobic or transphobic bullying; or racial discrimination

This policy also complies with our funding agreement and articles of association

## Definitions

**Safeguarding and promoting the welfare of children** means:

- Protecting children from maltreatment.
- Preventing impairment of children's mental and physical health or development.
- Ensuring that children grow up in circumstances consistent with the provision of safe and effective care.
- Taking action to enable all children to have the best outcomes.

**Child protection** is part of this definition and refers to activities undertaken to prevent children suffering, or being likely to suffer, significant harm.

**Abuse** is a form of maltreatment of a child and may involve inflicting harm or failing to act to prevent harm. Appendix 1 explains the different types of abuse.

**Neglect** is a form of abuse and is the persistent failure to meet a child's basic physical and/or psychological needs, likely to result in the serious impairment of the child's health or development. Appendix 1 defines neglect in more detail.

**Sharing of nudes and semi-nudes** (also known as sexting or youth produced sexual imagery) is where children share nude or semi-nude images, videos or live streams.

**Children** includes everyone under the age of 18.

The following 3 **safeguarding partners** are identified in Keeping Children Safe in Education (and defined in the Children Act 2004, as amended by chapter 2 of the Children and Social Work Act 2017). They will make arrangements to work together to safeguard and promote the welfare of local children, including identifying and responding to their needs:

- The local authority (LA).
- A clinical commissioning group for an area within the LA.

- The chief officer of police for a police area in the LA area.

**Victim** is a widely understood and recognised term, but we understand that not everyone who has been subjected to abuse considers themselves a victim, or would want to be described that way. When managing an incident, we will be prepared to use any term that the child involved feels most comfortable with.

**Alleged perpetrator(s)** and **perpetrator(s)** are widely used and recognised terms. However, we will think carefully about what terminology we use (especially in front of children) as, in some cases, abusive behaviour can be harmful to the perpetrator too. We will decide what's appropriate and which terms to use on a case-by-case basis.

## Equality statement

Some children have an increased risk of abuse, and additional barriers can exist for some children with respect to recognising or disclosing it. We are committed to anti-discriminatory practice and recognise children's diverse circumstances. We ensure that all children have the same protection, regardless of any barriers they may face.

We give special consideration to children who:

- Have special educational needs (SEN) or disabilities or health conditions (see section 10).
- Are young carers.
- May experience discrimination due to their race, ethnicity, religion, gender identification or sexuality.
- Have English as an additional language.
- Are known to be living in difficult situations – for example, temporary accommodation or where there are issues such as substance abuse or domestic violence.
- Are at risk of FGM, sexual exploitation, forced marriage, or radicalization.
- Are asylum seekers.
- Are at risk due to either their own or a family member's mental health needs.
- Are looked after or previously looked after (see section 12).
- Are missing from education.
- Whose parent/carer has expressed an intention to remove them from school to be home educated.



## Roles and responsibilities

Safeguarding and child protection is **everyone's** responsibility. This policy applies to all staff, volunteers and governors in the school and is consistent with the procedures of the 3 safeguarding partners. Our policy and procedures also apply to extended school and off-site activities.

The school plays a crucial role in preventative education. This is in the context of a whole-school approach to preparing pupils for life in modern Britain, and a culture of zero tolerance of sexism, misogyny/misandry, homophobia, biphobia and sexual violence/harassment. This will be underpinned by our:

- Behaviour policy.
- Pastoral support system.
- Planned programme of relationships, sex and health education (PSHE), which is inclusive and delivered regularly, tackling issues such as:
  - Healthy and respectful relationships.
  - Boundaries and consent.
  - Stereotyping, prejudice and equality.
  - Body confidence and self-esteem.
  - How to recognise an abusive relationship (including coercive and controlling behaviour).
  - The concepts of, and laws relating to, sexual consent, sexual exploitation, abuse, grooming, coercion, harassment, rape, domestic abuse, so-called honour-based violence such as forced marriage and female genital mutilation (FGM) and how to access support.
  - What constitutes sexual harassment and sexual violence and why they're always unacceptable.

### All staff will:

- Read and understand part 1 and annex B of the Department for Education's statutory safeguarding guidance, [Keeping Children Safe in Education](#), and review this guidance at least annually.
- Sign a declaration at the beginning of each academic year to say that they have reviewed the guidance.
- Reinforce the importance of online safety when communicating with parents. This includes making parents aware of what we ask children to do online (e.g. sites they need to visit or who they'll be interacting with online).



- Provide a safe space for pupils who are LGBTQ+ to speak out and share their concerns.

All staff will be aware of our systems which support safeguarding, including:

- This child protection and safeguarding policy.
- School behaviour, discipline and sanctions policy.
- Staff code of conduct.
- The safeguarding response to children who go missing from education.
- The early help assessment process (sometimes known as the common assessment framework) and their role in it, including identifying emerging problems, liaising with the DSL, and sharing information with other professionals to support early identification and assessment.
- The process for making referrals to local authority children's social care and for statutory assessments that may follow a referral, including the role they might be expected to play.
- What to do if they identify a safeguarding issue or a child tells them they are being abused or neglected, including specific issues such as FGM, and how to maintain an appropriate level of confidentiality while liaising with relevant professionals.
- The signs of different types of abuse and neglect, as well as specific safeguarding issues, such as child-on-child abuse, child sexual exploitation (CSE), child criminal exploitation (CCE), indicators of being at risk from or involved with serious violent crime, FGM, radicalisation and serious violence (including that linked to county lines).
- The importance of reassuring victims that they are being taken seriously and that they will be supported and kept safe.
- The fact that children can be at risk of harm inside and outside of their home, at school and online.
- The fact that children who are (or who are perceived to be) lesbian, gay, bi or trans (LGBTQ+) can be targeted by other children.
- What to look for to identify children who need help or protection.

Section 15 and appendix 4 of this policy outline in more detail how staff are supported to do this.

### **The designated safeguarding lead (DSL)**

The DSL is a member of the senior leadership team. Our DSL is Phil Roberts/Assistant Headteacher. The DSL takes lead responsibility for child protection and wider safeguarding in the school.

During term time, the DSL will be available during school hours for staff to discuss any safeguarding concerns.

During term time, the DSL will be available during school hours for staff to discuss any safeguarding concerns.

The DSL can be contacted by email using [proberts@urmstongrammar.org.uk](mailto:proberts@urmstongrammar.org.uk) , out of term time an automatic reply will signpost support in case of an emergency.

When the DSL is unavailable, the Deputy DSL, Alison Thomason should be contacted.

If the DSL and Deputy DSL are unavailable, Riffat Wall (Headteacher), Tom Kennedy-Fowler (Deputy Headteacher) and Alex Lingwood (Head of 6<sup>th</sup> form) will act as cover.

The DSL will be given the time, funding, training, resources and support to:

- Provide advice and support to other staff on child welfare and child protection matters.
- Take part in strategy discussions and inter-agency meetings and/or support other staff to do so.
- Contribute to the assessment of children.
- Refer suspected cases, as appropriate, to the relevant body (local authority children's social care, Channel programme, Disclosure and Barring Service, and/or police), and support staff who make such referrals directly.
- Have a good understanding of harmful sexual behaviour.
- Take accountability for filtering and monitoring activity, working alongside the IT manager

The DSL will also:

- Keep the Headteacher informed of any issues.
- Liaise with local authority case managers and designated officers for child protection concerns as appropriate.
- Discuss the local response to sexual violence and sexual harassment with police and local authority children's social care colleagues to prepare the school's policies.
- Be confident that they know what local specialist support is available to support all children involved (including victims and alleged perpetrators) in sexual violence and sexual harassment, and be confident as to how to access this support.
- Be aware that children must have an 'appropriate adult' to support and help them in the case of a police investigation or search.

The full responsibilities of the DSL and Deputy DSL are set out in their job description.

## **The Governing Body**

The Governing Body will:

- Facilitate a whole-school approach to safeguarding, ensuring that safeguarding and child protection are at the forefront of, and underpin, all relevant aspects of process and policy development.
- Evaluate and approve this policy at each review, ensuring it complies with the law, and hold the headteacher to account for its implementation.
- Be aware of its obligations under the Human Rights Act 1998, the Equality Act 2010 (including the Public Sector Equality Duty), and our school's local multi-agency safeguarding arrangements.
- Appoint a senior board level (or equivalent) lead to monitor the effectiveness of this policy in conjunction with the full governing board. This is always a different person from the DSL.
- Ensure all staff undergo safeguarding and child protection training, including online safety, and that such training is regularly updated and in line with advice from safeguarding partners.
- Ensure that the school has appropriate filtering and monitoring systems in place and review their effectiveness, including; making sure that the leadership team and staff are aware of provisions in place and that they understand their expectations, roles and responsibilities around filtering and monitoring as part of the safeguarding training.
- Make sure:
  - The DSL has the appropriate status and authority to carry out their job, including additional time, funding, training, resources and support
  - Online safety is a running and interrelated theme within the whole-school approach to safeguarding and related policies.
  - The DSL has lead authority for safeguarding, including online safety and understanding the filtering and monitoring systems and processes in place.
  - The leadership team and relevant staff are aware of and understand the IT filters and monitoring systems in place, manage them effectively and know how to escalate concerns.
  - The school has procedures to manage any safeguarding concerns (no matter how small) or allegations that do not meet the harm threshold (low-level concerns) about staff members (including supply staff, volunteers and contractors). Appendix 3 of this policy covers this procedure.

- That this policy reflects that children with SEND, or certain medical or physical health conditions, can face additional barriers to any abuse or neglect being recognized.
- Where another body is providing services or activities (regardless of whether or not the children who attend these services/activities are children on the school roll):
  - Seek assurance that the other body has appropriate safeguarding and child protection policies/procedures in place, and inspect them if needed.
  - Make sure there are arrangements for the body to liaise with the school about safeguarding arrangements, where appropriate.
  - Make sure that safeguarding requirements are a condition of using the school premises, and that any agreement to use the premises would be terminated if the other body fails to comply.

The Chair of Governors will act as the 'case manager' in the event that an allegation of abuse is made against the Headteacher, where appropriate (see appendix 3).

All governors will read 'Keeping Children Safe in Education' in its entirety.

The 'training' section of this policy has information on how governors are supported to fulfil their role.

### **The Headteacher**

The Headteacher is responsible for the implementation of this policy, including:

- Ensuring that staff (including temporary staff) and volunteers:
  - Are informed of our systems which support safeguarding, including this policy, as part of their induction.
  - Understand and follow the procedures included in this policy, particularly those concerning referrals of cases of suspected abuse and neglect.
- Communicating this policy to parents/carers when their child joins the school and via the school website.
- Ensuring that the DSL has appropriate time, funding, training and resources, and that there is always adequate cover if the DSL is absent.
- Ensuring that all staff undertake appropriate safeguarding and child protection training, and updating the content of the training regularly

- Acting as the 'case manager' in the event of an allegation of abuse made against another member of staff or volunteer, where appropriate (see appendix 3)
- Making decisions regarding all low-level concerns, though they may wish to collaborate with the DSL on this

## **Virtual school heads**

Virtual school heads have a non-statutory responsibility for the strategic oversight of the educational attendance, attainment and progress of pupils with a social worker.

They should also identify and engage with key professionals, e.g. DSLs, SENCOs, social workers, mental health leads and others.

## **Confidentiality**

Our staff are trained to understand that confidentiality cannot be offered in the case of a disclosure. Staff are asked to share any safeguarding concerns using their CPOMS login, or in cases of an urgent nature to discuss directly with the DSL or Deputy DSL.

A range of contacts are identified on page 3 and 4 of this document. Staff are also able to consult the 'Whistleblowing Policy' if they feel a concern has not been acted on in a timely or effective manner.

Staff are encouraged to work on a principle of 'What if I'm right?' rather than 'What if I'm wrong?' and the message is reinforced that concerns, however trivial they may appear, may fit into a larger narrative and should always be shared.

- Timely information sharing is essential in effective safeguarding.
- Fears about sharing information must not be allowed to stand in the way of the need to promote the welfare and protect the safety of children.
- The data protection act (DPA) 2018 and UK GDPR do not prevent or limit the sharing of information for the purposes of keeping children safe.
- If staff need to share 'special category personal data', the DPA 2018 contains 'safeguarding of children and individuals at risk' as a processing condition that allows practitioners to share information without consent if:
  - It is not possible to gain consent.

- It cannot be reasonably expected that a practitioner will gain consent.
- Gaining consent would put a child at risk.
- Staff should never promise a child that they will not tell anybody about a report of abuse as this may not be in the best in the child's best interests.
- If a victim asks the school not to tell anybody about sexual violence or harassment:
  - There is no definitive answer, because even if a victim does not consent to sharing information, staff may lawfully share it if there is another legal basis under the UK GDPR that applies.
  - The DSL will have to balance the victims wishes against their duty to protect the victim and other children.
  - The DSL should consider that:
    - Parents/Carers would normally be informed (Unless this puts the victim at greater risk).
    - The basic safeguarding principle is: If a child is at risk of harm, is in immediate danger or has been harmed, a referral should be made to local authority children's social care.
    - Rape, assault by penetration and sexual assault are crimes. Where a report is made about any of these, it should be reported to the police.

Regarding anonymity, all staff will:

- Be aware of anonymity, witness support and the criminal process in general where an allegation of sexual violence or sexual harassment is progressing through the criminal justice system.
- Do all they reasonably can to protect the anonymity of any children involved in any report of sexual violence or sexual harassment, for example, carefully considering which staff should know about the report, and any support for children involved.
- Consider the potential impact of social media in facilitating the spreading of rumours and exposing victims' identities.

The government's [information sharing advice for safeguarding practitioners](#) includes 7 'golden rules' for sharing information, and will support staff who have to make decisions about sharing information

If staff are in any doubt about sharing information, they should speak to the DSL (or Deputy DSL).

Confidentiality is also addressed in the 'Record keeping' section of this policy and allegations of abuse against staff in appendix 3

## Recognising abuse and taking action

Staff, volunteers and governors must follow the procedures set out below in the event of a safeguarding issue.

Please note – in this and subsequent sections, you should take any references to the DSL to mean “the DSL (or a Deputy DSL)”.

### **If a child is suffering or likely to suffer harm, or in immediate danger**

Make a referral to children's social care and/or the police **immediately** if you believe a child is suffering or likely to suffer from harm or is in immediate danger. **Anyone can make a referral.**

Tell the DSL as soon as possible if you make a referral directly.

All key contacts for making referrals are outlined on page 3 and 4 of this document. Staff are also aware of the whistleblowing policy if they feel that action has not been timely or effective.

<https://www.gov.uk/report-child-abuse-to-local-council> is also available to report a concern to your local council.

### **If a child makes a disclosure to you**

If a child discloses a safeguarding issue to you, you should:

- Listen to and believe them. Allow them time to talk freely and do not ask leading questions
- Stay calm and do not show that you are shocked or upset
- Tell the child they have done the right thing in telling you. Do not tell them they should have told you sooner
- Explain what will happen next and that you will have to pass this information on. Do not promise to keep it a secret
- Write up your conversation as soon as possible in the child's own words. Stick to the facts, and do not put your own judgement on it
- Sign and date the write-up and pass it on to the DSL, and add directly to CPOMs Alternatively, if appropriate, make a referral to children's social care and/or the police directly (see 7.1), and tell the DSL as soon as possible that you have done so. Aside from these people, do not disclose the information to anyone else unless told to do so by a relevant authority involved in the safeguarding process



Bear in mind that some children may:

- Not recognise their experiences as harmful.
- Feel embarrassed, humiliated or threatened. This could be due to their vulnerability, disability, sexual orientation and/or language barriers.
- Not feel ready, or know how to tell someone they are being abused, exploited or neglected.

None of this should stop you from having a 'professional curiosity' and speaking to the DSL if you have concerns about a child.

### **If you discover that FGM has taken place or a pupil is at risk of FGM**

Keeping Children Safe in Education explains that FGM comprises "all procedures involving partial or total removal of the external female genitalia, or other injury to the female genital organs".

FGM is illegal in the UK and a form of child abuse with long-lasting, harmful consequences. It is also known as 'female genital cutting', 'circumcision' or 'initiation'.

Possible indicators that a pupil has already been subjected to FGM, and factors that suggest a pupil may be at risk, are set out in appendix 4 of this policy.

**Any teacher** who either:

- Is informed by a girl under 18 that an act of FGM has been carried out on her; or
- Observes physical signs which appear to show that an act of FGM has been carried out on a girl under 18 and they have no reason to believe that the act was necessary for the girl's physical or mental health or for purposes connected with labour or birth.

Must immediately report this to the police, personally. This is a mandatory statutory duty, and teachers will face disciplinary sanctions for failing to meet it.

Unless they have been specifically told not to disclose, they should also discuss the case with the DSL and involve children's social care as appropriate.

**Any other member of staff** who discovers that an act of FGM appears to have been carried out on a **pupil under 18** must speak to the DSL and follow our local safeguarding procedures.

The duty for teachers mentioned above does not apply in cases where a pupil is *at risk* of FGM or FGM is suspected but is not known to have been carried out. Staff should not examine pupils.

**Any member of staff** who suspects a pupil is *at risk* of FGM or suspects that FGM has been carried out or discovers that a pupil **aged 18 or over** appears to have been a victim of FGM] should speak to the DSL and follow our local safeguarding procedures.

Any concerns regarding a possible case of FGM should be shared with the DSL as a matter of urgency. Those concerns will also need to be noted in writing using their CPOMS login.

**If you have concerns about a child (as opposed to believing a child is suffering or likely to suffer from harm, or is in immediate danger)**

Figure 1 over the page illustrates the procedure to follow if you have any concerns about a child's welfare.

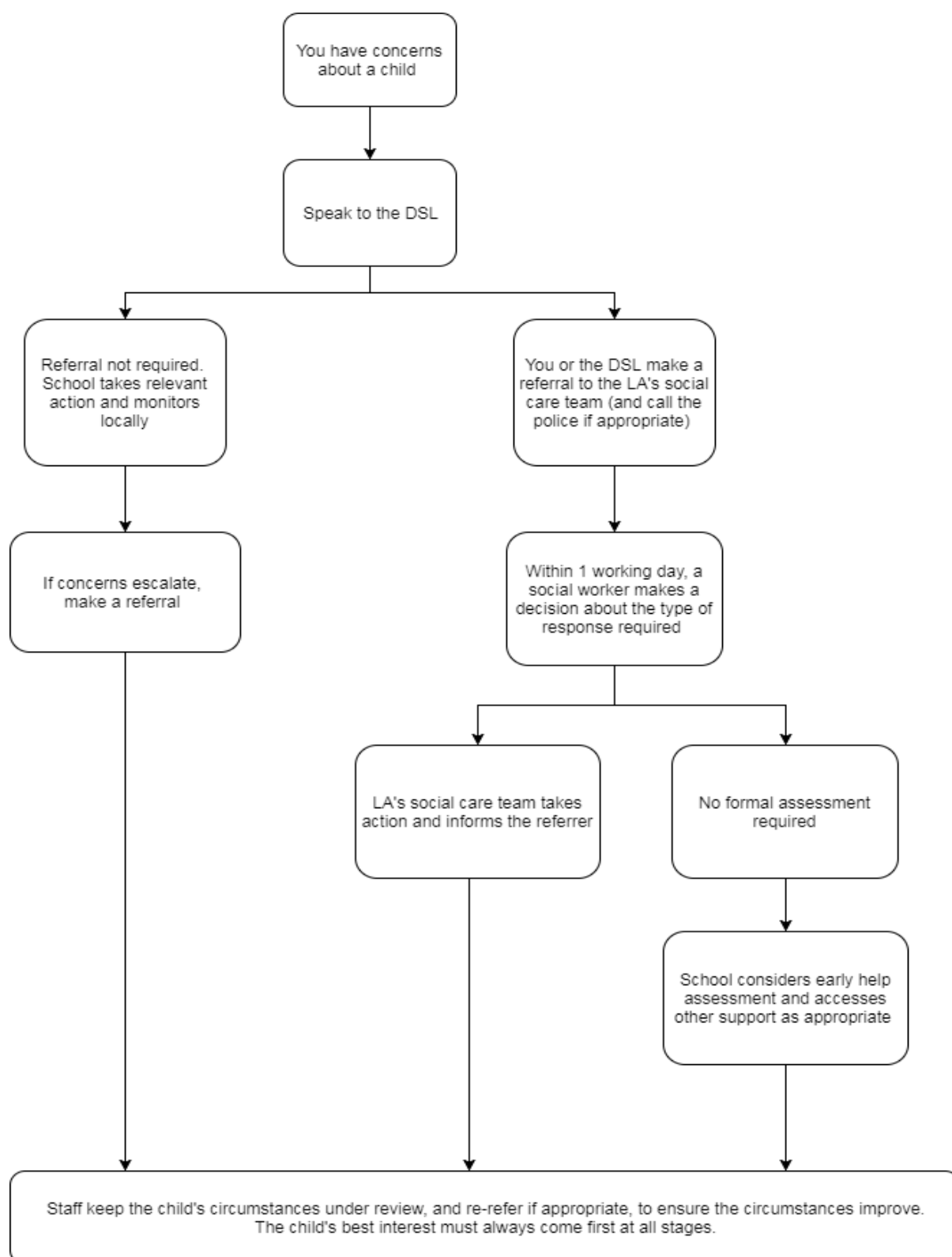
Where possible, speak to the DSL first to agree a course of action.

If in exceptional circumstances the DSL is not available, this should not delay appropriate action being taken. Speak to a member of the senior leadership team and/or take advice from local authority children's social care. You can also seek advice at any time from the NSPCC helpline on 0808 800 5000. Share details of any actions you take with the DSL as soon as practically possible.

Make a referral to local authority children's social care directly, if appropriate (see 'Referral' below). Share any action taken with the DSL as soon as possible.

**Figure 1: procedure if you have concerns about a child's welfare (as opposed to believing a child is suffering or likely to suffer from harm, or in immediate danger)**

(Note – if the DSL is unavailable, refer to the Designated safeguarding lead (DSL) section on page 10)



## **Early help assessment**

If an early help assessment is appropriate, the DSL will generally lead on liaising with other agencies and setting up an inter-agency assessment as appropriate. Staff may be required to support other agencies and professionals in an early help assessment, in some cases acting as the lead practitioner.

We will discuss and agree, with statutory safeguarding partners, levels for the different types of assessment, as part of local arrangements.

The DSL will keep the case under constant review and the school will consider a referral to local authority children's social care if the situation does not seem to be improving. Timelines of interventions will be monitored and reviewed.

Any member of staff may make these referrals and contacts are provided as part of the KCSiE handbook and in statutory training about how this can be done. Colleagues are encouraged where possible and timely to liaise with the DSL/Deputy DSL through this process.

## **Referral**

If it is appropriate to refer the case to local authority children's social care or the police, the DSL will make the referral or support you to do so.

If you make a referral directly you must tell the DSL as soon as possible.

The local authority will make a decision within 1 working day of a referral about what course of action to take and will let the person who made the referral know the outcome. The DSL or person who made the referral must follow up with the local authority if this information is not made available, and ensure outcomes are properly recorded.

If the child's situation does not seem to be improving after the referral, the DSL or person who made the referral must follow local escalation procedures to ensure their concerns have been addressed and that the child's situation improves.

## **If you have concerns about extremism**

If a child is not suffering or likely to suffer from harm, or in immediate danger, where possible speak to the DSL first to agree a course of action.

If in exceptional circumstances the DSL is not available, this should not delay appropriate action being taken. Speak to a member of the senior leadership team and/or seek advice from local authority children's social care. Make a referral to local authority children's social care directly, if appropriate (see

'Referral' above). Inform the DSL or deputy as soon as practically possible after the referral.

Where there is a concern, the DSL will consider the level of risk and decide which agency to make a referral to. This could include [Channel](#), the government's programme for identifying and supporting individuals at risk of being drawn into terrorism, or the local authority children's social care team.

The Department for Education also has a dedicated telephone helpline, 020 7340 7264, which school staff and governors can call to raise concerns about extremism with respect to a pupil. You can also email [counter.extremism@education.gov.uk](mailto:counter.extremism@education.gov.uk). Note that this is not for use in emergency situations.

In an emergency, call 999 or the confidential anti-terrorist hotline on 0800 789 321 if you:

- Think someone is in immediate danger
- Think someone may be planning to travel to join an extremist group
- See or hear something that may be terrorist-related

### **If you have a mental health concern**

Mental health problems can, in some cases, be an indicator that a child has suffered or is at risk of suffering abuse, neglect or exploitation.

Staff will be alert to behavioural signs that suggest a child may be experiencing a mental health problem or be at risk of developing one.

If you have a mental health concern about a child that is also a safeguarding concern, take immediate action by following the steps the referral section (Page 18)

If you have a mental health concern that is **not** also a safeguarding concern, speak to the DSL to agree a course of action.

Concerns with mental health can be referred through the pastoral leaders to the school's inclusion panel. If the referral is of a more urgent nature it should be made directly to the DSL.

Our school operates a 'team around the child approach' to pastoral and enhanced pastoral support. Members of the pastoral, SEND or safeguarding team are able to refer students for discussion at fortnightly 'inclusion panel' meetings which allow for a coordinated approach to identifying student needs (including mental health) and providing appropriate support. Urmston Grammar works with Thrive, an NHS led mental health service and employs a counsellor to work with students as needed.

### **Concerns about a staff member, supply teacher, volunteer or contractor**

If you have concerns about a member of staff (including a supply teacher, volunteer or contractor), or an allegation is made about a member of staff (including a supply teacher, volunteer or contractor) posing a risk of harm to children, speak to the headteacher as soon as possible. If the concerns/allegations are about the headteacher, speak to the chair of governors.

The Headteacher/Chair of Governors will then follow the procedures set out in appendix 3, if appropriate.

Where you believe there is a conflict of interest in reporting a concern or allegation about a member of staff (including a supply teacher, volunteer or contractor) to the headteacher, report it directly to the local authority designated officer (LADO).

### **Allegations of abuse made against other pupils**

We recognise that children are capable of abusing their peers. Abuse will never be tolerated or passed off as “banter”, “just having a laugh” or “part of growing up”, as this can lead to a culture of unacceptable behaviours and an unsafe environment for pupils.

We also recognise the gendered nature of child-on-child abuse. However, all child-on-child abuse is unacceptable and will be taken seriously.

Most cases of pupils hurting other pupils will be dealt with under our school's behaviour policy, but this child protection and safeguarding policy will apply to any allegations that raise safeguarding concerns. This might include where the alleged behaviour:

- Is serious, and potentially a criminal offence.
- Could put pupils in the school at risk.
- Is violent.
- Involves pupils being forced to use drugs or alcohol.
- Involves sexual exploitation, sexual abuse or sexual harassment, such as indecent exposure, sexual assault, upskirting or sexually inappropriate pictures or videos (including the sharing of nudes and semi-nudes).

See appendix 4 for more information about child-on-child abuse.

## **Procedures for dealing with allegations of child-on-child abuse**

If a pupil makes an allegation of abuse against another pupil:

- You must record the allegation and tell the DSL, but **do not** investigate it.
- The DSL will contact the local authority children's social care team and follow its advice, as well as the police if the allegation involves a potential criminal offence.
- The DSL will put a risk assessment and support plan into place for all children involved (including the victim(s), the child(ren) against whom the allegation has been made and any others affected) with a named person they can talk to if needed. This will include considering school transport as a potentially vulnerable place for a victim or alleged perpetrator(s).
- The DSL will contact the children and adolescent mental health services (CAMHS), if appropriate.

If the incident is a criminal offence and there are delays in the criminal process, the DSL will work closely with the police (and other agencies as required) while protecting children and/or taking any disciplinary measures against the alleged perpetrator. We will ask the police if we have any questions about the investigation.

More information on this can be found in the school's Child-on-child abuse policy.

## **Creating a supportive environment in school and minimising the risk of child-on-child abuse**

We recognise the importance of taking proactive action to minimise the risk of child-on-child abuse, and of creating a supportive environment where victims feel confident in reporting incidents.

To achieve this, we will:

- Challenge any form of derogatory or sexualised language or inappropriate behaviour between peers, including requesting or sending sexual images.
- Be vigilant to issues that particularly affect different genders – for example, sexualised or aggressive touching or grabbing towards female pupils, and initiation or hazing type violence with respect to boys.
- Ensure our curriculum helps to educate pupils about appropriate behaviour and consent and adapt scheduling on the basis of evidence of need.



- Ensure pupils are able to easily and confidently report abuse using our reporting systems (as described in section 7.10 below).
- Ensure staff reassure victims that they are being taken seriously.
- Be alert to reports of sexual violence and/or harassment that may point to environmental or systemic problems that could be addressed by updating policies, processes and the curriculum, or could reflect wider issues in the local area that should be shared with safeguarding partners.
- Support children who have witnessed sexual violence, especially rape or assault by penetration. We will do all we can to make sure the victim, alleged perpetrator(s) and any witnesses are not bullied or harassed.
- Consider intra familial harms and any necessary support for siblings following a report of sexual violence and/or harassment.
- Ensure staff are trained to understand:
  - How to recognise the indicators and signs of child-on-child abuse, and know how to identify it and respond to reports.
  - That even if there are no reports of child-on-child abuse in school, it does not mean it is not happening – staff should maintain an attitude of “it could happen here”.
  - That if they have any concerns about a child's welfare, they should act on them immediately rather than wait to be told, and that victims may not always make a direct report. For example:
    - Children can show signs or act in ways they hope adults will notice and react to.
    - A friend may make a report.
    - A member of staff may overhear a conversation.
    - A child's behaviour might indicate that something is wrong.
  - That certain children may face additional barriers to telling someone because of their vulnerability, disability, gender, ethnicity and/or sexual orientation
  - That a pupil harming a peer could be a sign that the child is being abused themselves, and that this would fall under the scope of this policy.
  - The impact that Artificial Intelligence may have on facilitating abuse.
  - The important role they have to play in preventing child-on-child abuse and responding where they believe a child may be at risk from it.
  - That they should speak to the DSL if they have any concerns.

- That social media is likely to play a role in the fall-out from any incident or alleged incident, including for potential contact between the victim, alleged perpetrator(s) and friends from either side.

The DSL will take the lead role in any disciplining of the alleged perpetrator(s). We will provide support at the same time as taking any disciplinary action.

Disciplinary action can be taken while other investigations are going on, e.g. by the police. The fact that another body is investigating or has investigated an incident doesn't (in itself) prevent our school from coming to its own conclusion about what happened and imposing a penalty accordingly. We will consider these matters on a case-by-case basis, taking into account whether:

- Taking action would prejudice an investigation and/or subsequent prosecution – we will liaise with the police and/or LA children's social care to determine this.
- There are circumstances that make it unreasonable or irrational for us to reach our own view about what happened while an independent investigation is ongoing.

## **Sharing of nudes and semi-nude images ('sexting')**

### **Your responsibilities when responding to an incident**

If you are made aware of an incident involving the consensual or non-consensual sharing of nude or semi-nude images/videos (also known as 'sexting' or 'youth produced sexual imagery'), you must report it to the DSL immediately.

You must **not**:

- View, copy, print, share, store or save the imagery yourself, or ask a pupil to share or download it (if you have already viewed the imagery by accident, you must report this to the DSL).
- Delete the imagery or ask the pupil to delete it.
- Ask the pupil(s) who are involved in the incident to disclose information regarding the imagery (this is the DSL's responsibility) .
- Share information about the incident with other members of staff, the pupil(s) it involves or their, or other, parents and/or carers.
- Say or do anything to blame or shame any young people involved.

You should explain that you need to report the incident, and reassure the pupil(s) that they will receive support and help from the DSL.

### **Initial review meeting**

Following a report of an incident, the DSL will hold an initial review meeting with appropriate school staff – this may include the staff member who reported the incident and the safeguarding or leadership team that deals with safeguarding concerns. This meeting will consider the initial evidence and aim to determine:

- Whether there is an immediate risk to pupil(s).
- If a referral needs to be made to the police and/or children's social care.
- If it is necessary to view the image(s) in order to safeguard the young person (in most cases, images or videos should not be viewed).
- What further information is required to decide on the best response.
- Whether the image(s) has been shared widely and via what services and/or platforms (this may be unknown).
- Whether immediate action should be taken to delete or remove images or videos from devices or online services.
- Any relevant facts about the pupils involved which would influence risk assessment.
- If there is a need to contact another school, college, setting or individual.
- Whether to contact parents or carers of the pupils involved (in most cases parents/carers should be involved).

The DSL will make an immediate referral to police and/or children's social care if:

- The incident involves an adult.
- There is reason to believe that a young person has been coerced, blackmailed or groomed, or if there are concerns about their capacity to consent (for example, owing to special educational needs).
- What the DSL knows about the images or videos suggests the content depicts sexual acts which are unusual for the young person's developmental stage, or are violent.
- The imagery involves sexual acts and any pupil in the images or videos is under 13.

- The DSL has reason to believe a pupil is at immediate risk of harm owing to the sharing of nudes and semi-nudes (for example, the young person is presenting as suicidal or self-harming).

If none of the above apply then the DSL, in consultation with the Headteacher and other members of staff as appropriate, may decide to respond to the incident without involving the police or children's social care. The decision will be made and recorded in line with the procedures set out in this policy.

### **Further review by the DSL**

If at the initial review stage a decision has been made not to refer to police and/or children's social care, the DSL will conduct a further review to establish the facts and assess the risks.

They will hold interviews with the pupils involved (if appropriate).

If at any point in the process there is a concern that a pupil has been harmed or is at risk of harm, a referral will be made to children's social care and/or the police immediately.

### **Informing parents/carers**

The DSL will inform parents/carers at an early stage and keep them involved in the process, unless there is a good reason to believe that involving them would put the pupil at risk of harm.

### **Referring to the police**

If it is necessary to refer an incident to the police, this will be done by dialling 101

### **Recording incidents**

All incidents of sharing of nudes and semi-nudes, and the decisions made in responding to them, will be recorded. The record-keeping arrangements set out in the 'Record keeping' section of this policy also apply to recording these incidents.

### **Curriculum coverage**

Pupils are taught about the issues surrounding the sharing of nudes and semi-nudes as part of our PSHE/RSE curriculum. Teaching covers the following in relation to the sharing of nudes and semi-nudes:

- What it is.

- How it is most likely to be encountered.
- The consequences of requesting, forwarding or providing such images, including when it is and is not abusive and when it may be deemed as online sexual harassment.
- Issues of legality.
- The risk of damage to people's feelings and reputation.

Pupils also learn the strategies and skills needed to manage:

- Specific requests or pressure to provide (or forward) such images.
- The receipt of such images.

This policy on online safety is shared with pupils so they are aware of the processes the school will follow in the event of an incident.

### **Reporting systems for our pupils**

Where there is a safeguarding concern, we will take the child's wishes and feelings into account when determining what action to take and what services to provide.

We recognise the importance of ensuring pupils feel safe and comfortable to come forward and report any concerns and/or allegations.

To achieve this, we will:

- Put systems in place for pupils to confidently report abuse.
- Ensure our reporting systems are well promoted, easily understood and easily accessible for pupils.
- Make it clear to pupils that their concerns will be taken seriously, and that they can safely express their views and give feedback.

Pupils are aware of the key safeguarding staff in school, but are also aware that they can talk to any member of staff they feel comfortable talking to. Pupils also know that they can use the confide button if they want to share something via email instead of talking face to face.

These processes are regularly shared by form tutors in PSHE, in assemblies and are widely displayed around the school.

Pupils will always be treated sensitively and with care. They are reassured that information will not be shared more widely than it needs to be.

### **Online safety and the use of mobile technology**

We recognise the importance of safeguarding children from potentially harmful and inappropriate online material, and we understand that

technology is a significant component in many safeguarding and wellbeing issues.

To address this, our school aims to:

- › Have robust processes in place to ensure the online safety of pupils, staff, volunteers and governors.
- › Protect and educate the whole school community in its safe and responsible use of technology, including mobile and smart technology (which we refer to as 'mobile phones').
- › Set clear guidelines for the use of mobile phones for the whole school community.
- › Establish clear mechanisms to identify, intervene in and escalate any incidents or concerns, where appropriate.

### **The 4 key categories of risk**

Our approach to online safety is based on addressing the following categories of risk:

- › **Content** – being exposed to illegal, inappropriate or harmful content, such as pornography, fake news, racism, misogyny, self-harm, suicide, antisemitism, radicalisation and extremism.
- › **Contact** – being subjected to harmful online interaction with other users, such as peer-to-peer pressure, commercial advertising and adults posing as children or young adults with the intention to groom or exploit them for sexual, criminal, financial or other purposes.
- › **Conduct** – personal online behaviour that increases the likelihood of, or causes, harm, such as making, sending and receiving explicit images (e.g. consensual and non-consensual sharing of nudes and semi-nudes and/or pornography), sharing other explicit images and online bullying.
- › **Commerce** – risks such as online gambling, inappropriate advertising, phishing and/or financial scams.

### **To meet our aims and address the risks above we will:**

*(To be read in conjunction with the school's 'mobile use policy', 'Online safety policy' and 'staff code of conduct')*

- The safe use of social media, the internet and technology.
- Keeping personal information private.
- How to recognise unacceptable behaviour online.
- How to report any incidents of cyber-bullying, ensuring pupils are encouraged to do so, including where they are a witness rather than a victim.

### **We will also:**

- Train staff on safe internet use and online safeguarding issues including cyberbullying and the risks of online radicalization. All staff members with pupil facing roles will receive annual refresher training.
- Educate parents and carers about online safety via our website, communications and during information evenings. Parents are also invited to sign up to 'National online safety' where there are courses and information available to offer age appropriate support to their children regarding online dangers.
- Ensure that staff are made aware of any restrictions placed on them regarding mobile phone use, for example:
  - Staff will not take pictures or recordings of children on their personal phones or cameras.
  - Staff will not use personal phones or contact details (Including personal email addresses) to communicate with any stakeholders regarding school business.
- All pupils, parents/carers, staff, volunteers and governors are expected to sign an acceptable usage agreement regarding internet use in school, use of the schools ICT systems and use mobile phones and smart technology.
- Explain the sanctions we will use if a pupil is in breach of our policies on acceptable usage of the internet or mobile phones.
- Ensure all pupils, staff and parents/carers are aware that staff have the power to search pupils phones as set out in the DfE guidance on searching, screening and confiscation. This is shared on the online safety section of our website.
- Put in place robust filtering and monitoring systems to limit children to the 4 key categories of risk (described above) from the schools IT systems.
- Carry out a regular review of our approach to online safety, supported by a risk assessment that considers the contextual risks for our school.

### **Artificial intelligence (AI)**

Generative artificial intelligence (AI) tools are now widespread and easy to access. Staff, pupils and parents/carers may be familiar with generative chatbots such as ChatGPT and Google Bard.

Urmston Grammar recognizes that AI has many uses, including enhancing teaching and learning and in helping to protect and safeguard pupils. However, AI may also have the potential to facilitate abuse (for example bullying and grooming) and/or expose pupils to harmful content. For example in the form of 'deepfakes' where AI is used to create images, audio or video hoaxes that look real.



Urmston Grammar will treat any use of AI to access harmful content or bully pupils in line with this policy, along with the behaviour and anti-bullying policy.

Staff should be aware of the risks of using AI tools whilst they are still being developed and should consult with SLT before any new AI tool is used in school that may involve pupil sensitive information or will impact on GDPR.

## **Notifying parents/carers**

Where appropriate, we will discuss any concerns about a child with the child's parents or carers. The DSL or Deputy DSL will normally do this in the event of a suspicion or disclosure.

Other staff will only talk to parents or carers about any such concerns following consultation with the DSL.

If we believe that notifying the parents or carers would increase the risk to the child, we will discuss this with the local authority children's social care team before doing so.

In the case of allegations of abuse made against other children, we will normally notify the parents or carers of all the children involved. We will think carefully about what information we provide about the other child involved, and when. We will work with the police and/or local authority children's social care to make sure our approach to information sharing is consistent.

The DSL will, along with any relevant agencies (this will be decided on a case-by-case basis):

- Meet with the victim's parents/carers, with the victim, to discuss what's being put in place to safeguard them, and understand their wishes in terms of what support they may need and how the report will be progressed.
- Meet with the alleged perpetrator's parents/carers to discuss support for them, and what's being put in place that will impact them, e.g. moving them out of classes with the victim, and the reason(s) behind any decision(s).

## **Pupils with SEN, disabilities or health issues**

We recognise that pupils with special educational needs (SEN) or disabilities or certain health conditions can face additional safeguarding challenges, and are 3 times more likely to be abused than their peers. Additional barriers can exist when recognising abuse and neglect in this group, including:

- Assumptions that indicators of possible abuse such as behaviour, mood and injury relate to the child's condition without further exploration.

- Pupils being more prone to peer group isolation or bullying (including prejudice-based bullying) than other pupils.
- The potential for pupils with SEN, disabilities or certain health conditions being disproportionately impacted by behaviours such as bullying, without outwardly showing any signs.
- Communication barriers and difficulties in managing or reporting these challenges.

We offer extra pastoral support for these pupils. This includes a dedicated pastoral team working closely with the SEN department and all relevant stakeholders to best support in the individual circumstances they face.

Any abuse involving pupils with SEND will require close liaison with the DSL (or Deputy DSL) and the SENCO.

## **Pupils with a social worker**

Pupils may need a social worker due to safeguarding or welfare needs. We recognise that a child's experiences of adversity and trauma can leave them vulnerable to further harm as well as potentially creating barriers to attendance, learning, behaviour and mental health.

The DSL and all members of staff will work with and support social workers to help protect vulnerable children.

Where we are aware that a pupil has a social worker, the DSL will always consider this fact to ensure any decisions are made in the best interests of the pupil's safety, welfare and educational outcomes. For example, it will inform decisions about:

- Responding to unauthorised absence or missing education where there are known safeguarding risks.
- The provision of pastoral and/or academic support.

## **Looked after/Previously looked after children**

We will ensure that staff have the skills, knowledge and understanding to keep looked-after children and previously looked-after children safe. In particular, we will ensure that:

- Appropriate staff have relevant information about children's looked after legal status, contact arrangements with birth parents or those with parental responsibility, and care arrangements.
- The DSL has details of children's social workers and relevant virtual school heads.

We have appointed a designated teacher, Angie Rogers (Assistant Headteacher), who is responsible for promoting the educational

achievement of looked-after children and previously looked-after children in line with [statutory guidance](#).

The designated teacher is appropriately trained and has the relevant qualifications and experience to perform the role.

As part of their role, the designated teacher will:

- Work closely with the DSL to ensure that any safeguarding concerns regarding looked-after and previously looked-after children are quickly and effectively responded to
- Work with virtual school heads to promote the educational achievement of looked-after and previously looked-after children, including discussing how pupil premium plus funding can be best used to support looked-after children and meet the needs identified in their personal education plans

## **Complaints and concerns about school safeguarding policies**

### **Complaints against staff**

Complaints against staff that are likely to require a child protection investigation will be handled in accordance with our procedures for dealing with allegations of abuse made against staff (see appendix 3).

### **Whistle-blowing**

Further information can be found in the Urmston Grammar 'Whistleblowing policy'. Whistle-blowing as an option is reinforced in annual safeguarding refresher training.

## **Record keeping**

We will hold records in line with our records retention schedule.

All safeguarding concerns, discussions, decisions made and the reasons for those decisions, must be recorded in writing. If you are in any doubt about whether to record something, discuss it with the DSL.

Records will include:

- A clear and comprehensive summary of the concern
- Details of how the concern was followed up and resolved
- A note of any action taken, decisions reached and the outcome

Concerns and referrals will be kept in a separate child protection file for each child.

Any non-confidential records will be readily accessible and available. Confidential information and records will be held securely and only available to those who have a right or professional need to see them.

Safeguarding records relating to individual children will be retained for a reasonable period of time after they have left the school.

Safeguarding records which contain information about allegations of sexual abuse will be retained for the Independent Inquiry into Child Sexual Abuse (IICSA), for the term of the inquiry.

If a child for whom the school has, or has had, safeguarding concerns moves to another school, the DSL will ensure that their child protection file is forwarded as soon as possible, securely, and separately from the main pupil file.

To allow the new school/college to have support in place when the child arrives, this should be within:

- › **5 days** for an in-year transfer, or within.
- › **The first 5 days** of the start of a new term.

In addition, if the concerns are significant or complex, and/or social services are involved, the DSL will speak to the DSL of the receiving school and provide information to enable them to have time to make any necessary preparations to ensure the safety of the child.

Urmston Grammar stores these records securely and electronically on the CPOMS system. All colleagues have access to share information via this system. Access to view these records is limited, with safeguarding concerns only visible to the DSL, Deputy DSL and Headteacher.

#### **In addition:**

- › Appendix 2 sets out our policy on record-keeping specifically with respect to recruitment and pre-appointment checks
- › Appendix 3 sets out our policy on record-keeping with respect to allegations of abuse made against staff.

## **Training**

### **All staff**

All staff members will undertake safeguarding and child protection training at induction, including on whistle-blowing procedures and online safety, to ensure they understand the school's safeguarding systems and their responsibilities, and can identify signs of possible abuse or neglect.

This training will be regularly updated and will:

- Be integrated, aligned and considered as part of the whole-school safeguarding approach and wider staff training, and curriculum planning.
- Be in line with advice from the 3 safeguarding partners.
- Have regard to the Teachers' Standards to support the expectation that all teachers:
  - Manage behaviour effectively to ensure a good and safe environment.
  - Have a clear understanding of the needs of all pupils.

All staff will have training on the government's anti-radicalisation strategy, Prevent, to enable them to identify children at risk of being drawn into terrorism and to challenge extremist ideas.

Staff will also receive regular safeguarding and child protection updates, including on online safety, as required but at least annually (for example, through emails, e-bulletins and staff meetings).

Contractors who are provided through a private finance initiative (PFI) or similar contract will also receive safeguarding training.

Volunteers will receive appropriate training, if applicable.

### **The DSL and Deputies**

The DSL, Deputy DSL and key members of the SLT will undertake child protection and safeguarding training at least every 2 years.

In addition, they will update their knowledge and skills at regular intervals and at least annually (for example, through e-bulletins, meeting other DSLs, or taking time to read and digest safeguarding developments).

They will also undertake Prevent awareness training.

### **Governors**

All governors receive training about safeguarding and child protection (including online safety) at induction, which is regularly updated. This is to make sure that they:

- › Have the knowledge and information needed to perform their functions and understand their responsibilities, such as providing strategic challenge.
- › Can be assured that safeguarding policies and procedures are effective and support the school to deliver a robust whole-school approach to safeguarding.

As the Chair of Governors may be required to act as the 'case manager' in the event that an allegation of abuse is made against the Headteacher, they receive training in managing allegations for this purpose.

## **Recruitment – interview panels**

At least 1 person conducting any interview for any post at the school will have undertaken safer recruitment training. This will cover, as a minimum, the contents of 'Keeping Children Safe in Education', and will be in line with local safeguarding procedures.

See appendix 2 of this policy for more information about our safer recruitment procedures.

## **Staff who have contact with pupils and families**

All staff who have contact with children and families will have supervisions which will provide them with support, coaching and training, promote the interests of children and allow for confidential discussions of sensitive issues.

All staff are able to access Employee Assistance Programme (EAP) for such support, the DSL and DSL have direct regular supervision from external providers.

## **Monitoring arrangements**

This policy will be reviewed **annually** by the DSL. At every review, it will be approved by the full governing board.

## **Links to other policies**

This policy links to the following policies and procedures

- Behaviour policy
- Staff code of conduct
- Complaints procedure statement
- Health and safety
- Mobile electronic devices – acceptable use policy
- Acceptable use of IT policy Year 7-11
- Acceptable use of IT policy 6<sup>th</sup> form
- Equality policy
- Relationship and sex education
- Designated teacher policy
- Whistleblowing policy
- Anti-bullying policy
- Child on child abuse policy

**These appendices are based on the Department for Education's statutory guidance, Keeping Children Safe in Education.**

## **Appendix 1: types of abuse**

**Abuse**, including neglect, and safeguarding issues are rarely standalone events that can be covered by 1 definition or label. In most cases, multiple issues will overlap.

**Physical abuse** may involve hitting, shaking, throwing, poisoning, burning or scalding, drowning, suffocating or otherwise causing physical harm to a child. Physical harm may also be caused when a parent or carer fabricates the symptoms of, or deliberately induces, illness in a child.

**Emotional abuse** is the persistent emotional maltreatment of a child such as to cause severe and adverse effects on the child's emotional development. Some level of emotional abuse is involved in all types of maltreatment of a child, although it may occur alone.

Emotional abuse may involve:

- › Conveying to a child that they are worthless or unloved, inadequate, or valued only insofar as they meet the needs of another person
- › Not giving the child opportunities to express their views, deliberately silencing them or 'making fun' of what they say or how they communicate
- › Age or developmentally inappropriate expectations being imposed on children. These may include interactions that are beyond a child's developmental capability, as well as overprotection and limitation of exploration and learning, or preventing the child participating in normal social interaction
- › Seeing or hearing the ill-treatment of another
- › Serious bullying (including cyber-bullying), causing children frequently to feel frightened or in danger, or the exploitation or corruption of children

**Sexual abuse** involves forcing or enticing a child or young person to take part in sexual activities, not necessarily involving a high level of violence, whether or not the child is aware of what is happening. The activities may involve:



- › Physical contact, including assault by penetration (for example, rape or oral sex) or non-penetrative acts such as masturbation, kissing, rubbing and touching outside of clothing
- › Non-contact activities, such as involving children in looking at, or in the production of, sexual images, watching sexual activities, encouraging children to behave in sexually inappropriate ways, or grooming a child in preparation for abuse (including via the internet)

Sexual abuse is not solely perpetrated by adult males. Women can also commit acts of sexual abuse, as can other children.

**Neglect** is the persistent failure to meet a child's basic physical and/or psychological needs, likely to result in the serious impairment of the child's health or development. Neglect may occur during pregnancy as a result of maternal substance abuse.

Once a child is born, neglect may involve a parent or carer failing to:

- › Provide adequate food, clothing and shelter (including exclusion from home or abandonment)
- › Protect a child from physical and emotional harm or danger
- › Ensure adequate supervision (including the use of inadequate care-givers)
- › Ensure access to appropriate medical care or treatment

It may also include neglect of, or unresponsiveness to, a child's basic emotional needs.

## Appendix 2: safer recruitment and DBS checks – policy and procedures

### Recruitment and selection process

To make sure we recruit suitable people, we will ensure that those involved in the recruitment and employment of staff to work with children have received appropriate safer recruitment training.

We have put the following steps in place during our recruitment and selection process to ensure we are committed to safeguarding and promoting the welfare of children.

#### Advertising

When advertising roles, we will make clear:

- Our school's commitment to safeguarding and promoting the welfare of children.
- That safeguarding checks will be undertaken.
- The safeguarding requirements and responsibilities of the role, such as the extent to which the role will involve contact with children.

- Whether or not the role is exempt from the Rehabilitation of Offenders Act 1974 and the amendments to the Exceptions Order 1975, 2013 and 2020. If the role is exempt, certain spent convictions and cautions are 'protected', so they do not need to be disclosed, and if they are disclosed, we cannot take them into account.

## **Application forms**

Our application forms will:

- › Include a statement saying that it is an offence to apply for the role if an applicant is barred from engaging in regulated activity relevant to children (where the role involves this type of regulated activity).
- › Include a copy of, or link to, our child protection and safeguarding policy and our policy on the employment of ex-offenders.

## **Shortlisting**

Our shortlisting process will involve at least 2 people and will:

- Consider any inconsistencies and look for gaps in employment and reasons given for them.
- Explore all potential concerns.

For all candidates, we will ask them to:

- Complete a self-declaration of their criminal record or any information that would make them unsuitable to work with children, so that they have the opportunity to share relevant information and discuss it at interview stage. The information we will ask for includes:
  - If they have a criminal history.
  - Whether they are included on the barred list.
  - Whether they are prohibited from teaching.
  - Information about any criminal offences committed in any country in line with the law as applicable in England and Wales
  - Any relevant overseas information
  - Sign a declaration confirming the information they have provided is true.

We will also consider carrying out an online search on shortlisted candidates to help identify any incidents or issues that are publicly available online. The terms of these searches are outlined in our recruitment and selection policy.

## **Seeking references and checking employment history**

We will obtain references before interview. Any concerns raised will be explored further with referees and taken up with the candidate at interview.

When seeking references, we will:

- Not accept open references.
- Liaise directly with referees and verify any information contained within references with the referees
- Ensure any references are from the candidate's current employer and completed by a senior person. Where the referee is school based, we will ask for the reference to be confirmed by the Headteacher/Principal as accurate in respect to disciplinary investigations.
- Obtain verification of the candidate's most recent relevant period of employment if they are not currently employed.
- Secure a reference from the relevant employer from the last time the candidate worked with children if they are not currently working with children.
- Compare the information on the application form with that in the reference and take up any inconsistencies with the candidate.
- Resolve any concerns before any appointment is confirmed.

### **Interview and selection**

When interviewing candidates, we will:

- Probe any gaps in employment, or where the candidate has changed employment or location frequently and ask candidates to explain this.
- Explore any potential areas of concern to determine the candidate's suitability to work with children.
- Record all information considered and decisions made.

### **Pre-appointment vetting checks**

We will record all information on the checks carried out in the school's single central record (SCR). Copies of these checks, where appropriate, will be held in individuals' personnel files. We follow requirements and best practice in retaining copies of these checks, as set out below.

### **New staff**

All offers of appointment will be conditional until satisfactory completion of the necessary pre-employment checks. When appointing new staff, we will:

- Verify their identity.
- Obtain (via the applicant) an enhanced DBS certificate, including barred list information for those who will be engaging in regulated activity (see definition below). We will obtain the certificate before, or as soon as practicable after, appointment, including when using the DBS update service. We will not keep a copy of the certificate for

longer than 6 months, but when the copy is destroyed, we may still keep a record of the fact that vetting took place, the result of the check and recruitment decision taken.

- Obtain a separate barred list check if they will start work in regulated activity before the DBS certificate is available.
- Verify their mental and physical fitness to carry out their work responsibilities.
- Verify their right to work in the UK. We will keep a copy of this verification for the duration of the member of staff's employment and for 2 years afterwards.
- Verify their professional qualifications, as appropriate.
- Ensure they are not subject to a prohibition order if they are employed to be a teacher.
- Carry out further additional checks, as appropriate, on candidates who have lived or worked outside of the UK. These could include, where available:
  - For all staff, including teaching positions: [criminal records checks for overseas applicants](#).
  - For teaching positions: obtaining a letter from the professional regulating authority in the country where the applicant has worked, confirming that they have not imposed any sanctions or restrictions on that person, and/or are aware of any reason why that person may be unsuitable to teach.
  - Check that candidates taking up a management position\* are not subject to a prohibition from management (section 128) direction made by the secretary of state.

\* Management positions are most likely to include, but are not limited to, Headteachers and Deputy/Assistant Headteachers.

**Regulated activity means a person who will be:**

- Responsible, on a regular basis in a school or college, for teaching, training, instructing, caring for or supervising children; or
- Carrying out paid, or unsupervised unpaid, work regularly in a school or college where that work provides an opportunity for contact with children; or
- Engaging in intimate or personal care or overnight activity, even if this happens only once and regardless of whether they are supervised or not.

**Existing staff**

In certain circumstances we will carry out all the relevant checks on existing staff as if the individual was a new member of staff. These circumstances are when:

- There are concerns about an existing member of staff's suitability to work with children; or
- An individual moves from a post that is not regulated activity to one that is; or
- There has been a break in service of 12 weeks or more

We will refer to the DBS anyone who has harmed, or poses a risk of harm, to a child or vulnerable adult where:

- We believe the individual has engaged in [relevant conduct](#); or
- We believe the individual has received a caution or conviction for a relevant (automatic barring either with or without the right to make representations) offence, under the [Safeguarding Vulnerable Groups Act 2006 \(Prescribed Criteria and Miscellaneous Provisions\) Regulations 2009](#); or
- We believe the 'harm test' is satisfied in respect of the individual (i.e. they may harm a child or vulnerable adult or put them at risk of harm); and
- The individual has been removed from working in regulated activity (paid or unpaid) or would have been removed if they had not left.

The details of this can also be found in our 'recruitment and selection' policy

### **Agency and third-party staff**

We will obtain written notification from any agency or third-party organisation that it has carried out the necessary safer recruitment checks that we would otherwise perform. We will also check that the person presenting themselves for work is the same person on whom the checks have been made.

### **Contractors**

We will ensure that any contractor, or any employee of the contractor, who is to work at the school has had the appropriate level of DBS check (this includes contractors who are provided through a PFI or similar contract). This will be:

- An enhanced DBS check with barred list information for contractors engaging in regulated activity.
- An enhanced DBS check, not including barred list information, for all other contractors who are not in regulated activity but whose work provides them with an opportunity for regular contact with children.

We will obtain the DBS check for self-employed contractors.

We will not keep copies of such checks for longer than 6 months.

Contractors employed through a company will provide written declaration signed by a named individual that the appropriate safeguarding checks have taken place.

Contractors who have not had any checks will not be allowed to work unsupervised or engage in regulated activity under any circumstances.

We will check the identity of all contractors and their staff on arrival at the school.

### **Trainee/student teachers**

Where applicants for initial teacher training are salaried by us, we will ensure that all necessary checks are carried out.

Where trainee teachers are fee-funded, we will obtain written confirmation from the training provider that necessary checks have been carried out and that the trainee has been judged by the provider to be suitable to work with children.

### **Volunteers**

We will:

- Never leave an unchecked volunteer unsupervised or allow them to work in regulated activity.
- Obtain an enhanced DBS check with barred list information for all volunteers who are new to working in regulated activity.
- Carry out a risk assessment when deciding whether to seek an enhanced DBS check without barred list information for any volunteers not engaging in regulated activity. We will retain a record of this risk assessment.

### **Governors**

All governors will have an enhanced DBS check without barred list information.

They will have an enhanced DBS check with barred list information if working in regulated activity.

The Chair of Governors will have their DBS check countersigned by the Secretary of State.

All proprietors, trustees, local governors and members will also have the following checks:

- A section 128 check (to check prohibition on participation in management under [section 128 of the Education and Skills Act 2008](#)).

- › Identity.
- › Right to work in the UK.
- › Other checks deemed necessary if they have lived or worked outside the UK.

### **Staff working in alternative provision settings**

Where we place a pupil with an alternative provision provider, we obtain written confirmation from the provider that they have carried out the appropriate safeguarding checks on individuals working there that we would otherwise perform.

### **Adults who supervise pupils on work experience**

When organising work experience, we will ensure that policies and procedures are in place to protect children from harm.

We will also consider whether it is necessary for barred list checks to be carried out on the individuals who supervise a pupil under 16 on work experience. This will depend on the specific circumstances of the work experience, including the nature of the supervision, the frequency of the activity being supervised, and whether the work is regulated activity.

### **Pupils staying with host families**

Where the school makes arrangements for pupils to be provided with care and accommodation by a host family to which they are not related (for example, during a foreign exchange visit), we will request enhanced DBS checks with barred list information on those people.

Where the school is organising such hosting arrangements overseas and host families cannot be checked in the same way, we will work with our partner schools abroad to ensure that similar assurances are undertaken prior to the visit.

## **Appendix 3: allegations of abuse made against staff**

Please refer to our 'managing allegations against staff' procedure on the school website and Staff SharePoint.

## **Appendix 4: specific safeguarding issues**

### **Children missing from education**

A child going missing from education, particularly repeatedly, can be a warning sign of a range of safeguarding issues. This might include abuse or neglect, such as sexual abuse or exploitation or child criminal exploitation, or issues such as mental health problems, substance abuse, radicalisation, FGM or forced marriage.

There are many circumstances where a child may become missing from education, but some children are particularly at risk. These include children who:

- Are at risk of harm or neglect
- Are at risk of forced marriage or FGM
- Come from Gypsy, Roma, or Traveller families
- Come from the families of service personnel
- Go missing or run away from home or care
- Are supervised by the youth justice system
- Cease to attend a school
- Come from new migrant families

We will follow our procedures for unauthorised absence and for dealing with children who go missing from education, particularly on repeat occasions, to help identify the risk of abuse and neglect, including sexual exploitation, and to help prevent the risks of going missing in future. This includes informing the local authority if a child leaves the school without a new school being named and adhering to requirements with respect to sharing information with the local authority, when applicable, when removing a child's name from the admission register at non-standard transition points.

Staff will be trained in signs to look out for and the individual triggers to be aware of when considering the risks of potential safeguarding concerns which may be related to being missing, such as travelling to conflict zones, FGM and forced marriage.

If a staff member suspects that a child is suffering from harm or neglect, we will follow local child protection procedures, including with respect to making reasonable enquiries. We will make an immediate referral to the local authority children's social care team, and the police, if the child is suffering or likely to suffer from harm, or in immediate danger.

### **Child criminal exploitation**

Child criminal exploitation (CCE) is a form of abuse where an individual or group takes advantage of an imbalance of power to coerce, control, manipulate or deceive a child into criminal activity, in exchange for something the victim needs or wants, and/or for the financial or other advantage of the perpetrator or facilitator, and/or through violence or the threat of violence.



The abuse can be perpetrated by males or females, and children or adults. It can be a one-off occurrence or a series of incidents over time and range from opportunistic to complex organised abuse.

The victim can be exploited even when the activity appears to be consensual. It does not always involve physical contact and can happen online. For example, young people may be forced to work in cannabis factories, coerced into moving drugs or money across the country (county lines), forced to shoplift or pickpocket, or to threaten other young people.

Indicators of CCE can include a child:

- Appearing with unexplained gifts or new possessions
- Associating with other young people involved in exploitation
- Suffering from changes in emotional wellbeing
- Misusing drugs and alcohol
- Going missing for periods of time or regularly coming home late
- Regularly missing school or education
- Not taking part in education

If a member of staff suspects CCE, they will discuss this with the DSL. The DSL will trigger the local safeguarding procedures, including a referral to the local authority's children's social care team and the police, if appropriate.

## **Child sexual exploitation**

Child sexual exploitation (CSE) is a form of child sexual abuse where an individual or group takes advantage of an imbalance of power to coerce, manipulate or deceive a child into sexual activity, in exchange for something the victim needs or wants and/or for the financial advantage or increased status of the perpetrator or facilitator. It may, or may not, be accompanied by violence or threats of violence.

The abuse can be perpetrated by males or females, and children or adults. It can be a one-off occurrence or a series of incidents over time and range from opportunistic to complex organised abuse.

The victim can be exploited even when the activity appears to be consensual. Children or young people who are being sexually exploited may not understand that they are being abused. They often trust their abuser and may be tricked into believing they are in a loving, consensual relationship.

CSE can include both physical contact (penetrative and non-penetrative acts) and non-contact sexual activity. It can also happen online. For example, young people may be persuaded or forced to share sexually explicit images of themselves, have sexual conversations by text, or take part in sexual activities using a webcam. CSE may also occur without the victim's

immediate knowledge, for example through others copying videos or images.

In addition to the CCE indicators above, indicators of CSE can include a child:

- Having an older boyfriend or girlfriend.
- Suffering from sexually transmitted infections or becoming pregnant.

If a member of staff suspects CSE, they will discuss this with the DSL. The DSL will trigger the local safeguarding procedures, including a referral to the local authority's children's social care team and the police, if appropriate.

## **Child-on-child abuse**

*To be read in conjunction with the school's child on child abuse policy*

Child-on-child abuse is when children abuse other children. This type of abuse can take place inside and outside of school. It can also take place both face-to-face and online, and can occur simultaneously between the 2.

Our school has a zero-tolerance approach to sexual violence and sexual harassment. We recognise that even if there are no reports, that doesn't mean that this kind of abuse isn't happening.

Child-on-child abuse is most likely to include, but may not be limited to:

- › Bullying (including cyber-bullying, prejudice-based and discriminatory bullying)
- › Abuse in intimate personal relationships between children (this is sometimes known as 'teenage relationship abuse')
- › Physical abuse such as hitting, kicking, shaking, biting, hair pulling, or otherwise causing physical harm (this may include an online element which facilitates, threatens and/or encourages physical abuse)
- › Sexual violence, such as rape, assault by penetration and sexual assault (this may include an online element which facilitates, threatens and/or encourages sexual violence)
- › Sexual harassment, such as sexual comments, remarks, jokes and online sexual harassment, which may be standalone or part of a broader pattern of abuse
- › Causing someone to engage in sexual activity without consent, such as forcing someone to strip, touch themselves sexually, or to engage in sexual activity with a third party
- › Consensual and non-consensual sharing of nude and semi-nude images and/or videos (also known as sexting or youth produced sexual imagery)

- Upskirting, which typically involves taking a picture under a person's clothing without their permission, with the intention of viewing their genitals or buttocks to obtain sexual gratification, or cause the victim humiliation, distress or alarm
- Initiation/hazing type violence and rituals (this could include activities involving harassment, abuse or humiliation used as a way of initiating a person into a group and may also include an online element)

Where children abuse their peers online, this can take the form of, for example, abusive, harassing, and misogynistic messages; the non-consensual sharing of indecent images, especially around chat groups; and the sharing of abusive images and pornography, to those who don't want to receive such content.

If staff have any concerns about child-on-child abuse, or a child makes a report to them, they will follow the procedures set out in section 7 of this policy, as appropriate. In particular, section 7.8 and 7.9 set out more detail about our school's approach to this type of abuse.

When considering instances of harmful sexual behaviour between children, we will consider their ages and stages of development. We recognise that children displaying harmful sexual behaviour have often experienced their own abuse and trauma and will offer them appropriate support.

## **Domestic abuse**

Children can witness and be adversely affected by domestic abuse and/or violence at home where it occurs between family members. In some cases, a child may blame themselves for the abuse or may have had to leave the family home as a result.

Types of domestic abuse include intimate partner violence, abuse by family members, teenage relationship abuse (abuse in intimate personal relationships between children) and child/adolescent to parent violence and abuse. It can be physical, sexual, financial, psychological or emotional. It can also include ill treatment that isn't physical, as well as witnessing the ill treatment of others – for example, the impact of all forms of domestic abuse on children.

Anyone can be a victim of domestic abuse, regardless of gender, age, ethnicity, socioeconomic status, sexuality or background, and domestic abuse can take place inside or outside of the home. Children who witness domestic abuse are also victims.

Older children may also experience and/or be the perpetrators of domestic abuse and/or violence in their own personal relationships. This can include sexual harassment.

Exposure to domestic abuse and/or violence can have a serious, long-lasting emotional and psychological impact on children and affect their health, wellbeing, development and ability to learn.

If police are called to an incident of domestic abuse and any children in the household have experienced the incident, the police will inform the key adult in school (usually the designated safeguarding lead) before the child or children arrive at school the following day.

## **Homelessness**

Being homeless or being at risk of becoming homeless presents a real risk to a child's welfare.

The DSL and Deputy DSL will be aware of contact details and referral routes in to the local housing authority so they can raise/progress concerns at the earliest opportunity (where appropriate and in accordance with local procedures).

Where a child has been harmed or is at risk of harm, the DSL will also make a referral to children's social care.

## **So-called 'honour-based' abuse (including FGM and forced marriage)**

So-called 'honour-based' abuse (HBA) encompasses incidents or crimes committed to protect or defend the honour of the family and/or community, including FGM, forced marriage, and practices such as breast ironing.

Abuse committed in this context often involves a wider network of family or community pressure and can include multiple perpetrators.

All forms of HBA are abuse and will be handled and escalated as such. All staff will be alert to the possibility of a child being at risk of HBA or already having suffered it. If staff have a concern, they will speak to the DSL, who will activate local safeguarding procedures.

## **FGM**

The DSL will make sure that staff have access to appropriate training to equip them to be alert to children affected by FGM or at risk of FGM.

Section 7.3 of this policy sets out the procedures to be followed if a staff member discovers that an act of FGM appears to have been carried out or suspects that a pupil is at risk of FGM.

Indicators that FGM has already occurred include:

- A pupil confiding in a professional that FGM has taken place
- A mother/family member disclosing that FGM has been carried out
- A family/pupil already being known to social services in relation to other safeguarding issues
- A girl:
  - Having difficulty walking, sitting or standing, or looking uncomfortable
  - Finding it hard to sit still for long periods of time (where this was not a problem previously)

- Spending longer than normal in the bathroom or toilet due to difficulties urinating
- Having frequent urinary, menstrual or stomach problems
- Avoiding physical exercise or missing PE
- Being repeatedly absent from school, or absent for a prolonged period
- Demonstrating increased emotional and psychological needs – for example, withdrawal or depression, or significant change in behaviour
- Being reluctant to undergo any medical examinations
- Asking for help, but not being explicit about the problem
- Talking about pain or discomfort between her legs

Potential signs that a pupil may be at risk of FGM include:

- The girl's family having a history of practicing FGM (this is the biggest risk factor to consider)
- FGM being known to be practiced in the girl's community or country of origin.
- A parent or family member expressing concern that FGM may be carried out
- A family not engaging with professionals (health, education or other) or already being known to social care in relation to other safeguarding issues
- A girl:
  - Having a mother, older sibling or cousin who has undergone FGM
  - Having limited level of integration within UK society
  - Confiding to a professional that she is to have a "special procedure" or to attend a special occasion to "become a woman"
  - Talking about a long holiday to her country of origin or another country where the practice is prevalent, or parents/carers stating that they or a relative will take the girl out of the country for a prolonged period
  - Requesting help from a teacher or another adult because she is aware or suspects that she is at immediate risk of FGM
  - Talking about FGM in conversation – for example, a girl may tell other children about it (although it is important to take into account the context of the discussion)
  - Being unexpectedly absent from school

- Having sections missing from her 'red book' (child health record) and/or attending a travel clinic or equivalent for vaccinations/anti-malarial medication

The above indicators and risk factors are not intended to be exhaustive.

## Forced marriage

Forcing a person into marriage is a crime. A forced marriage is one entered into without the full and free consent of 1 or both parties and where violence, threats, or any other form of coercion is used to cause a person to enter into a marriage. Threats can be physical or emotional and psychological.

Staff will receive training around forced marriage and the presenting symptoms. We are aware of the '1 chance' rule, i.e. we may only have 1 chance to speak to the potential victim and only 1 chance to save them.

If a member of staff suspects that a pupil is being forced into marriage, they will speak to the pupil about their concerns in a secure and private place. They will then report this to the DSL.

The DSL will:

- › Speak to the pupil about the concerns in a secure and private place
- › Activate the local safeguarding procedures and refer the case to the local authority's designated officer
- › Seek advice from the Forced Marriage Unit on 020 7008 0151 or [fmf@fco.gov.uk](mailto:fmf@fco.gov.uk)
- › Refer the pupil to an education welfare officer, pastoral tutor, learning mentor, or school counsellor, as appropriate

## Preventing radicalisation

- **Radicalisation** refers to the process by which a person comes to support terrorism and extremist ideologies associated with terrorist groups.
- **Extremism** is vocal or active opposition to fundamental British values, such as democracy, the rule of law, individual liberty, and mutual respect and tolerance of different faiths and beliefs. This also includes calling for the death of members of the armed forces.
- **Terrorism** is an action that:
  - Endangers or causes serious violence to a person/people;
  - Causes serious damage to property; or
  - Seriously interferes or disrupts an electronic system.

The use or threat of terrorism must be designed to influence the government or to intimidate the public and is made for the purpose of advancing a political, religious or ideological cause.

Schools have a duty to prevent children from being drawn into terrorism. The DSL will undertake Prevent awareness training and make sure that staff have access to appropriate training to equip them to identify children at risk.

We will assess the risk of children in our school being drawn into terrorism. This assessment will be based on an understanding of the potential risk in our local area, in collaboration with our local safeguarding partners and local police force.

We will ensure that suitable internet filtering is in place, and equip our pupils to stay safe online at school and at home.

There is no single way of identifying an individual who is likely to be susceptible to an extremist ideology. Radicalisation can occur quickly or over a long period.

Staff will be alert to changes in pupils' behaviour.

The government website [Educate Against Hate](#) and charity [NSPCC](#) say that signs that a pupil is being radicalised can include:

- Refusal to engage with, or becoming abusive to, peers who are different from themselves.
- Becoming susceptible to conspiracy theories and feelings of persecution.
- Changes in friendship groups and appearance.
- Rejecting activities they used to enjoy.
- Converting to a new religion.
- Isolating themselves from family and friends
- Talking as if from a scripted speech
- An unwillingness or inability to discuss their views
- A sudden disrespectful attitude towards others
- Increased levels of anger
- Increased secretiveness, especially around internet use
- Expressions of sympathy for extremist ideologies and groups, or justification of their actions
- Accessing extremist material online, including on Facebook or Twitter
- Possessing extremist literature

- Being in contact with extremist recruiters and joining, or seeking to join, extremist organisations

Children who are at risk of radicalisation may have low self-esteem or be victims of bullying or discrimination. It is important to note that these signs can also be part of normal teenage behaviour – staff should have confidence in their instincts and seek advice if something feels wrong.

If staff are concerned about a pupil, they will follow our procedures set out in section 7.5 of this policy, including discussing their concerns with the DSL.

Staff should **always** take action if they are worried.

## **Sexual violence and sexual harassment between children in schools**

Sexual violence and sexual harassment can occur:

- Between 2 children of any age and sex
- Through a group of children sexually assaulting or sexually harassing a single child or group of children
- Online and face to face (both physically and verbally)

Sexual violence and sexual harassment exist on a continuum and may overlap.

Children who are victims of sexual violence and sexual harassment will likely find the experience stressful and distressing. This will, in all likelihood, adversely affect their educational attainment and will be exacerbated if the alleged perpetrator(s) attends the same school.

If a victim reports an incident, it is essential that staff make sure they are reassured that they are being taken seriously and that they will be supported and kept safe. A victim should never be given the impression that they are creating a problem by reporting any form of abuse or neglect. Nor should a victim ever be made to feel ashamed for making a report.

When supporting victims, staff will:

- Reassure victims that the law on child-on-child abuse is there to protect them, not criminalise them
- Regularly review decisions and actions, and update policies with lessons learnt
- Look out for potential patterns of concerning, problematic or inappropriate behaviour, and decide on a course of action where we identify any patterns
- Consider if there are wider cultural issues within the school that enabled inappropriate behaviour to occur and whether revising policies and/or providing extra staff training could minimise the risk of it happening again
- Remain alert to the possible challenges of detecting signs that a child has experienced sexual violence, and show sensitivity to their needs



Some groups are potentially more at risk. Evidence shows that girls, children with SEN and/or disabilities, and lesbian, gay, bisexual and transgender (LGBTQ+) children are at greater risk.

Staff should be aware of the importance of:

- Challenging inappropriate behaviours
- Making clear that sexual violence and sexual harassment is not acceptable, will never be tolerated and is not an inevitable part of growing up
- Challenging physical behaviours (potentially criminal in nature), such as grabbing bottoms, breasts and genitalia, pulling down trousers, flicking bras and lifting up skirts. Dismissing or tolerating such behaviours risks normalising them

### **Serious violence**

Indicators which may signal that a child is at risk from, or involved with, serious violent crime may include:

- Increased absence from school
- Change in friendships or relationships with older individuals or groups
- Significant decline in performance
- Signs of self-harm or a significant change in wellbeing
- Signs of assault or unexplained injuries
- Unexplained gifts or new possessions (this could indicate that the child has been approached by, or is involved with, individuals associated with criminal networks or gangs and may be at risk of criminal exploitation (see above))

Risk factors which increase the likelihood of involvement in serious violence include:

- Being male
- Having been frequently absent or permanently excluded from school
- Having experienced child maltreatment
- Having been involved in offending, such as theft or robbery

Staff will be aware of these indicators and risk factors. If a member of staff has a concern about a pupil being involved in, or at risk of, serious violence, they will report this to the DSL.

### **Checking the identity and suitability of visitors**

All visitors will be required to verify their identity to the satisfaction of staff.

If the visitor is unknown to the setting, we will check their credentials and reason for visiting before allowing them to enter the setting. Visitors should be ready to produce identification.

Visitors are expected to sign in as a visitor and wear a visitor's badge.

Visitors will be provided with a colour coded lanyard. A green strap indicates we have a valid DBS, a red strap indicates that we do not have a valid DBS and they are not to be left unaccompanied in the school.

Visitors to the school who are visiting for a professional purpose, such as educational psychologists and school improvement officers, will be asked to show photo ID and:

- Will be asked to show their DBS certificate, which will be checked alongside their photo ID; or
- The organisation sending the professional, such as the LA or educational psychology service, will provide prior written confirmation that an appropriate level of DBS check has been carried out (if this is provided, we will not ask to see the DBS certificate)

We will not invite into the school any speaker who is known to disseminate extremist views and will carry out appropriate checks to ensure that any individual or organisation using school facilities is not seeking to disseminate extremist views or radicalise pupils or staff.

### **Non-collection of children**

If a child is not collected at the end of the session/day as expected, we will attempt to call the primary contact on SIMs and work through secondary contacts in priority order. The student will be asked to wait at reception until we are confident that they are safe to make their own way home or can be collected.

### **Missing pupils**

Our procedures are designed to ensure that a missing child is found and returned to effective supervision as soon as possible. If a child goes missing, we will:

- Colleagues will check key areas such as toilets and communal areas to locate the student.
- Colleagues will be asked to review CCTV footage to verify whether the student has left the school site or not.
- Parents will be contacted if required and asked to try to make contact themselves. We will then request updates regarding location.

In the event that a student has gone missing during the school day, a follow up conversation with a member of the pastoral team will be set up to reinforce alternative strategies.